

Community Policing What's Your Definition?



What is Community Policing?



- "...a policing philosophy that promotes organizational strategies, which support the systematic use of partnerships and problem-solving techniques, to proactively address the immediate conditions that give rise to public safety issues such as crime, social disorder and fear of crime."

What is Community Policing?



- A Philosophy
- Organizational Strategies
- Use of Partnerships
- Use of Problem Solving Techniques
- Proactive Approaches
- Address Immediate Conditions
- Reduce Crime, Disorder & Fear of Crime

Community Partnerships

- Other Government Agencies
- Community Members/Groups
- Nonprofits/Service Providers
- Private Businesses
- Media

Organizational Elements

- Agency Management
- Organizational Structure
- Personnel
- Information Systems

Problem Solving

- SARA(H) Model
- Proactive
- Immediate Focus

Problem Solving Skills
are Essential to Community
Oriented Policing

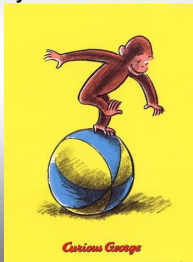
Problem Solving Models

- The Monkey and the Banana, Part 1



Problem Solving Models

- The Monkey and the Banana, Part 2



Problem Solving Problems

- We're afraid to try things because they've never been done, or because we've seen or heard that someone who tried something different had a difficult time with it.



Problem Solving Problems

- We find the safest approach is to try and handle only the things that are right in front of us.
- Because we are actively "doing", we are rewarded for that activity.
- When we "move up" in the world, we reward others for doing what we've been rewarded for.

Problem Solving Problems

- Because we have a strategy that "works" we never try anything else.
- Because our regular strategies don't include change, innovation or risk-taking, the scope of our perceived responsibility shrinks.
- Eventually we decide that even though we can't identify who's responsibility it is to solve problems, we don't think it's ours.



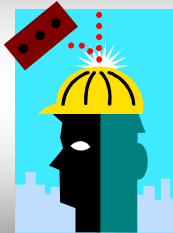
Problem Solving Models

- Traditional-Reactive
 - “Does someone have to die before something gets done?”



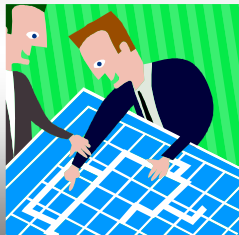
Problem Solving Models

- Amateur Efforts
 - “Someone should do something about that before someone gets hurt.”



Problem Solving Models

- Formal Problem Solving SARA(H)
 - Scanning
 - Analysis
 - Response
 - Assessment
 - History



Resources

- <http://www.cops.usdoj.gov/Default.asp?Item=36>
- <http://www.popcenter.org/>
